

# Penshaw Monument Woodland Management Plan Summary 2022-2032



National  
Trust



**13.29 hectares of  
mature, broadleaved  
woodland and scrub  
in Sunderland**

# Habitats and Species

The woodlands here sit in the Deciduous Woodland Priority Habitat and have a high proportion of ash in the stand.

There are fragments of calcareous grassland within compartments 2, 5 and 6, but the bulk of this habitat sits outside of the plan area.

Bats will be present across the plan area. This plan will see the retention and creation of deadwood and snags, as well as opening areas of the woodland and improving biodiversity increasing the habitat for bat roosting and foraging.

Lily-of-the valley have been reported here in the past, but not in recent years. Compartments 1d and 1e have a particularly well-developed native woodland ground flora

## Designations

Dawson's Plantation Quarry is a Geological SSSI the citation is as follows - This disused quarry contains an excellent exposure of a submarine debris flow that lies a few metres above the base of the Raisby Formation. Though generally less than a metre thick, the debris flow within Dawson's Plantation displays great lateral variation. It forms part of a more extensive, but discontinuous, thin sheet of disrupted strata. Movement of the debris flow, east-north-eastwards down the marginal slope of the Zechstein Sea, may have been triggered by one or more earthquakes.

The quarry also features many curved joints and minor movement planes, also possibly caused by contemporary, but slightly later earth movements. This site provides the best exposed example of a debris flow in the marine Permian of the Durham Province.

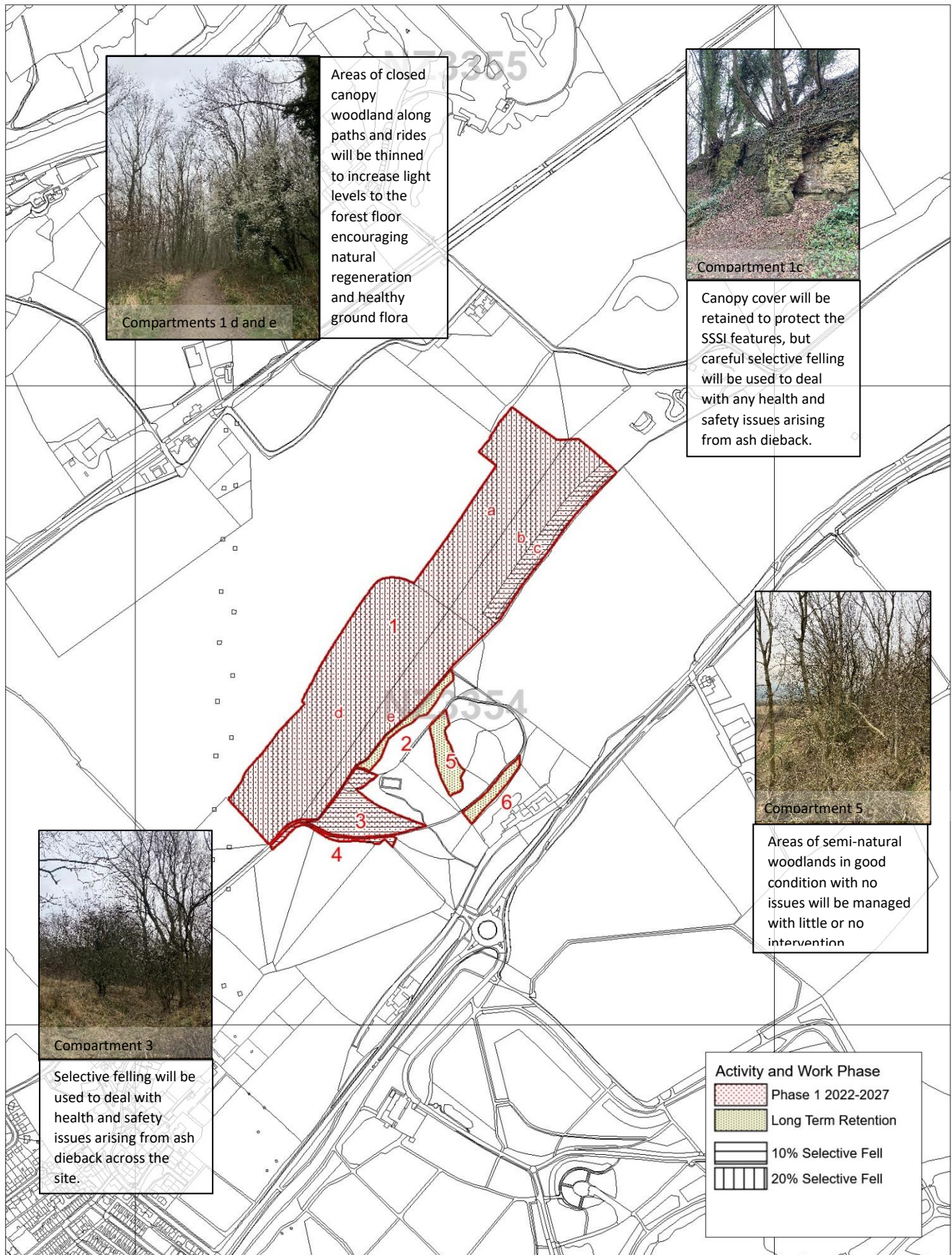
It was most recently surveyed by Jenny Loring of Natural England in November 2021 who found it to be in favourable condition and comments 'Woodland cover keeps down ground vegetation - any vegetation encroachment should be monitored and restricted.'

## Management Approaches

Selective felling will be used to open up areas of closed canopy along woodland paths allowing better development of ground flora and natural regeneration of native trees.

Ash dieback is present at this site. Where dying trees could present a risk to health and safety they will be pruned or felled to make them safe. Where they do not pose a risk to safety, they will be retained, adding to the woodland's deadwood resource.

Where woodlands are safe and in good ecological condition, no intervention will be required.



Penshaw Monument Woodland Plan 2022-2042 - Activity Map - 2022 - 2032

Scale 1:7500 at A4

