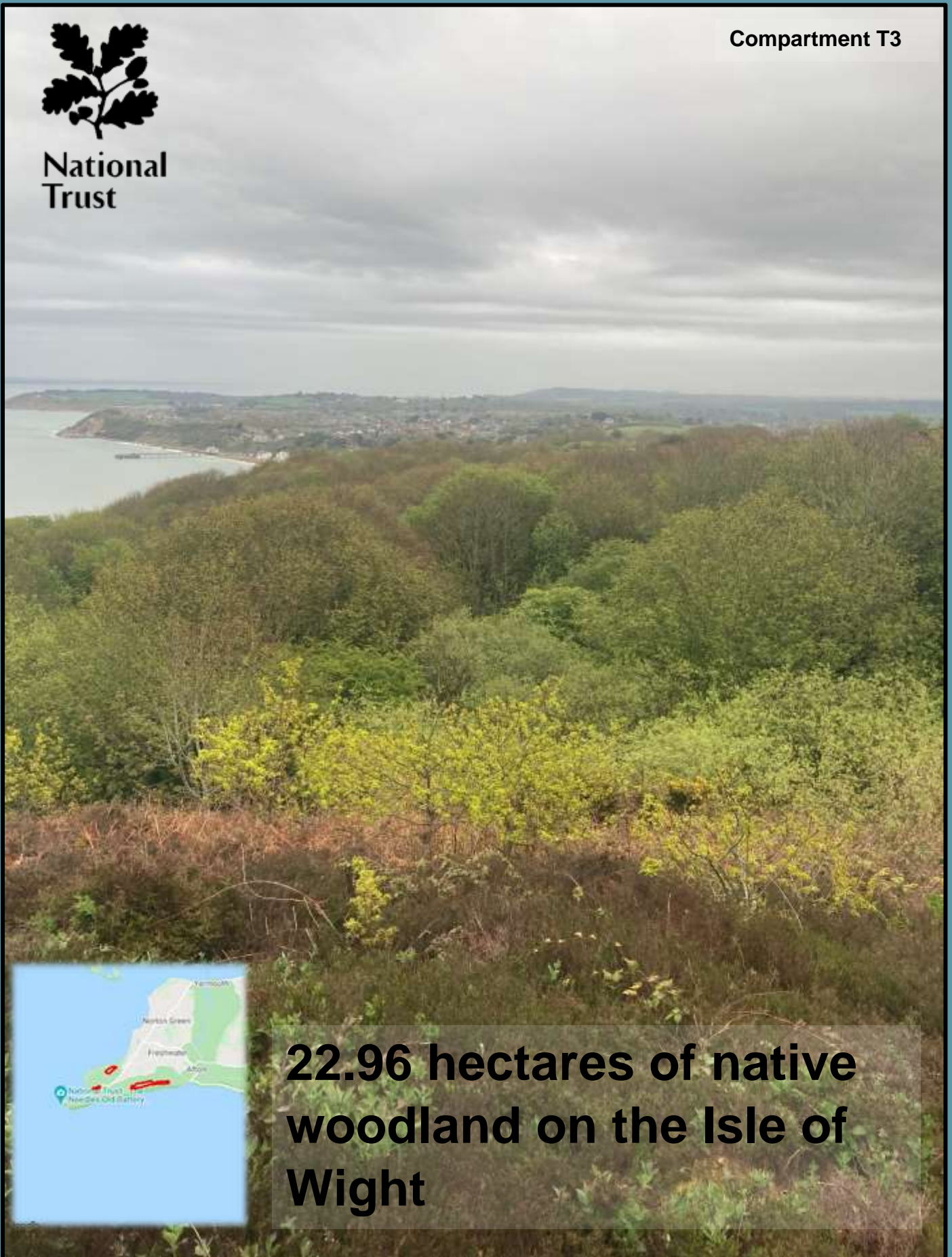


Tennyson Down Woodland Management Plan Summary 2022-2033



National
Trust

Compartment T3



22.96 hectares of native woodland on the Isle of Wight

Habitats and Species

The woodlands and trees at Tennyson Down sit on the edge of SSSI calcareous grassland. Scrub encroachment on to these grasslands from the wood is a key issue of conservation concern and will be addressed by this plan.

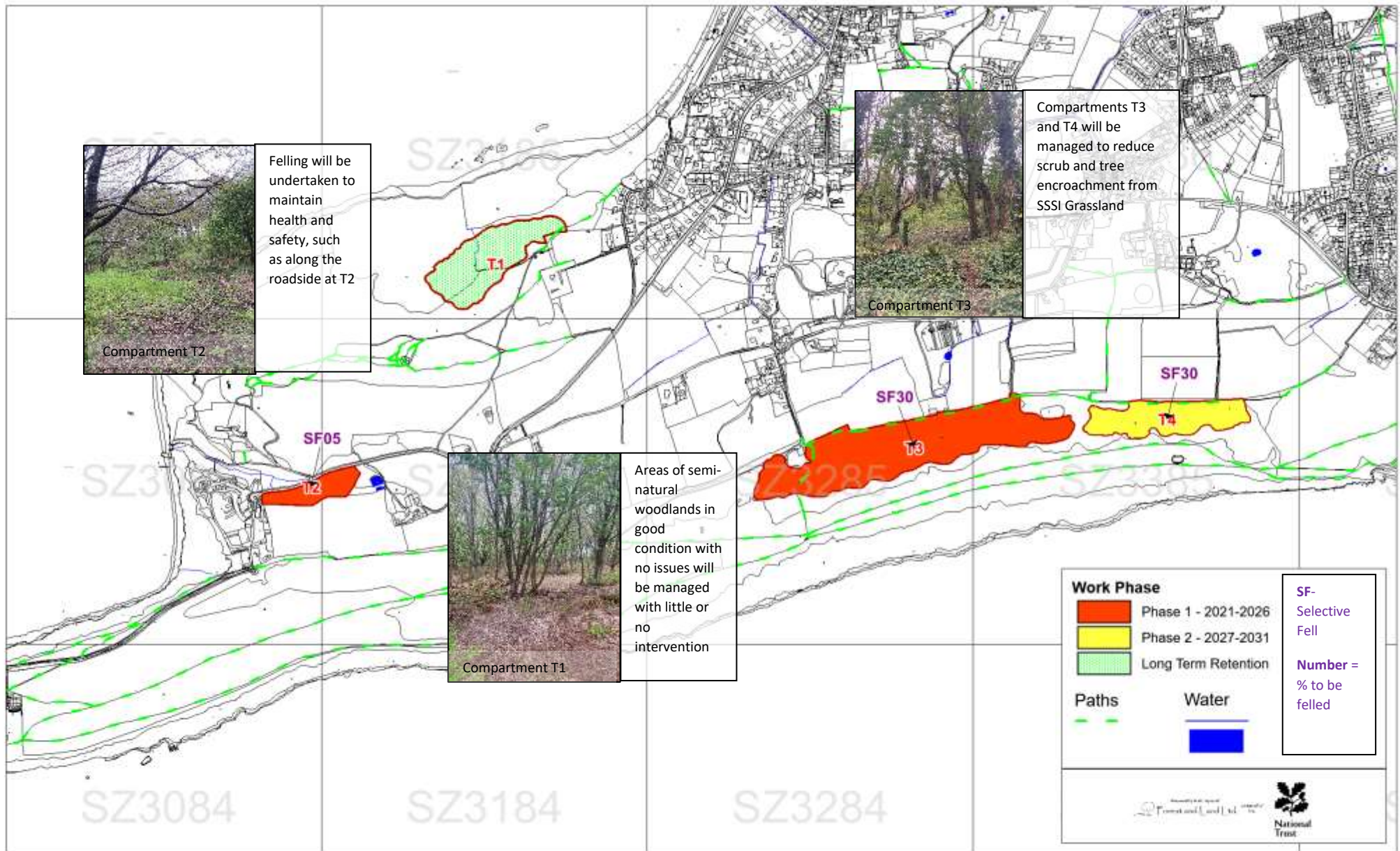
Designations

T1,2 and 4 sit in the Headon Warren and West High Down SSSI – Noted for its chalk grasslands, threatened by scrub encroachment. T3 and 4 are also designated as SAC.

Management Approaches

In compartments T3 and 4, we aim to undertake selective felling to promote scrub and tree control, protecting the SSSI grassland.

Compartments 1 and 2 will be managed with the minimum of intervention.



Isle Of Wight Woodland Plan 2022-2042
 Map 2b- Tennyson - Activity and Work Phase
 Scale 1-15000 at A4